

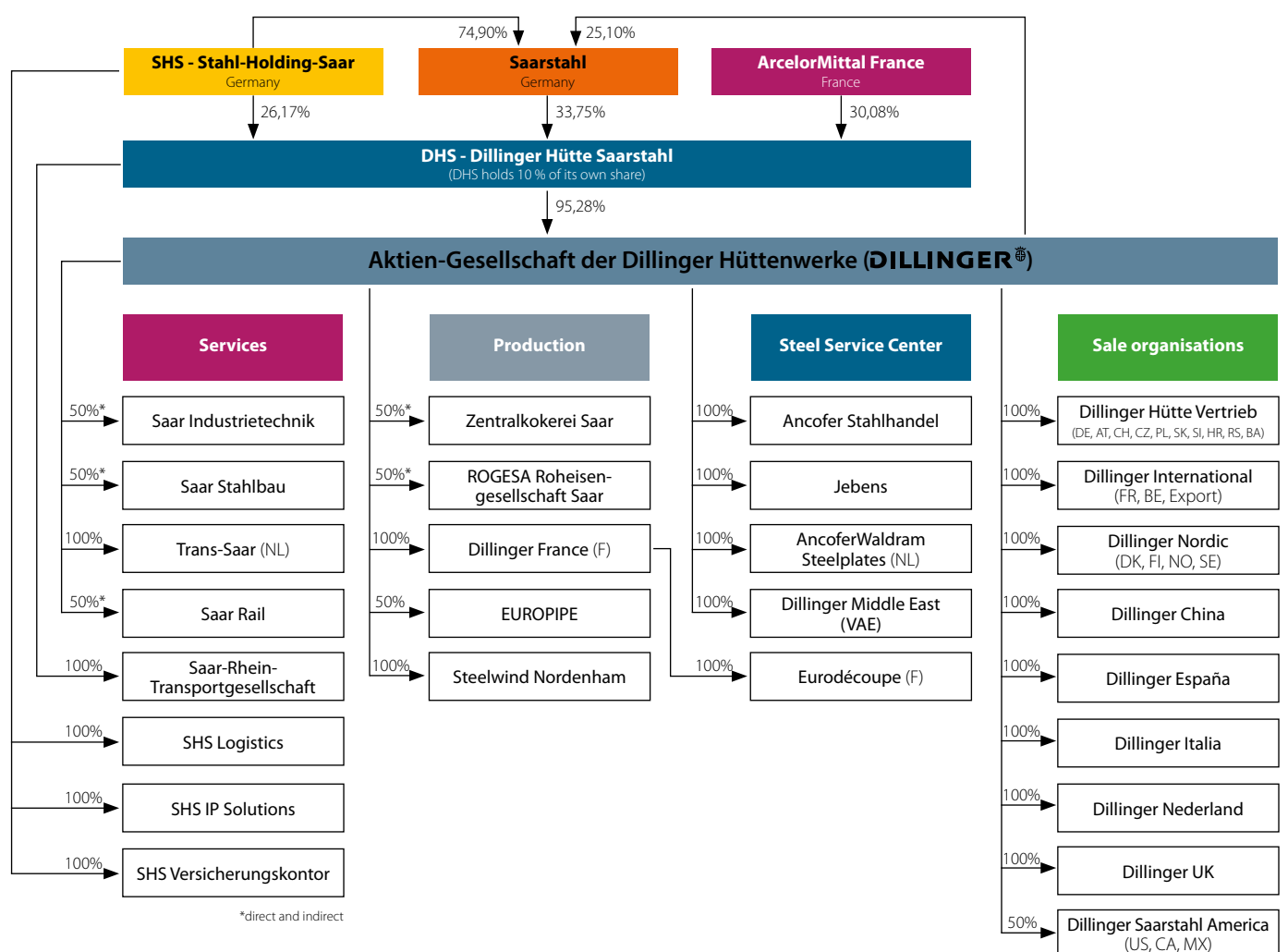
FACTS AND FIGURES 2021



Dillinger's main data at a glance

		2018	2019	2020	2021
Production					
Crude steel production	kt	2 334	2 238	1 816	2 281
Heavy plate production in total	kt	1 910	1 847	1 406	1 782
at Dillingen	kt	1 248	1 291	1 000	1 237
at Dunkirk (Dillinger France)	kt	662	556	406	545
Employees (without trainees)					
at Dillingen	per 31.12.	4 919	4 871	3 925	3 565
at Dunkirk (Dillinger France)	per 31.12.	538	541	520	510
Key financial data Dillinger					
Sales	millions of €	2 019	1 990	1 430	1 714
EBITDA	millions of €	66	-20	- 50	173
EBIT	millions of €	- 6	-91	- 119	112
Key financial data and total of employees of Dillinger Group (DHS consolidated)					
Sales	millions of €	2 202	2 087	1 645	2 281
EBITDA	millions of €	178	-27	- 114	245
EBIT	millions of €	55	-151	- 238	124
Employees	per 31.12.	7 310	7 296	6 196	5 645

The most important shareholdings of Dillinger (simplified)



Dillinger steel for the energy transition

Denmark's largest offshore wind farm (Kriegers Flak) builds on heavy plate from Dillinger.

Delivered quantity: 45,000 t
Wall thickness: 45 - 94 mm



© Bladt Industries

Ain Dubai

The world's tallest Ferris wheel is made of steel from Dillinger.

Delivered quantity: 10,375 t
Qualities: S690QL, S460QL, S355NL, S355ML
Wall thickness: 15 - 200 mm



© creativefamily - stock.adobe.com

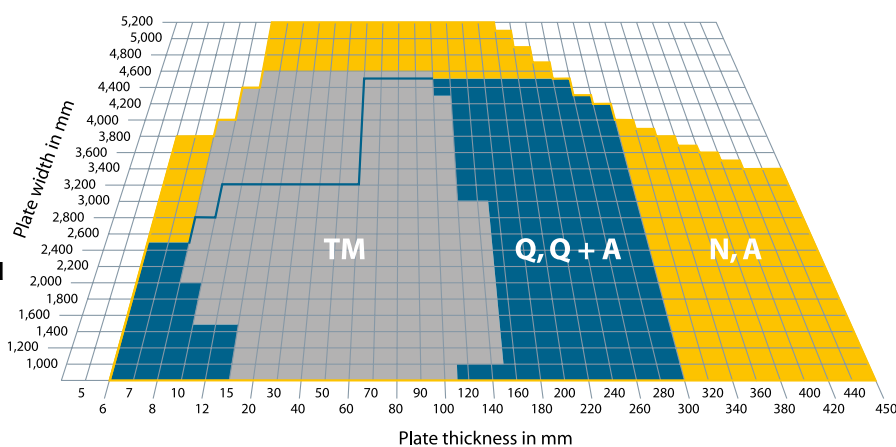
Dimensions for various delivery conditions

Plate dimensions beyond the standard dimension range are possible on request in many cases.

N, A = normalized
TM = thermomechanically rolled
Q, Q+A = quenched / quenched + tempered

Max. plate length: 28 m
Max. plate weight: 42 t*

* up to 52 t in special cases



Neckar Bridge

Setting sail with Dillinger LP plates.

Delivered quantity: 1,600 t
Qualities: S355J2+N, S355N/NL, S460N/NL, S460QL, S460ML
Wall thickness: 15 - 200 mm



© schlaich bergemann partner

Product mix

- General structural steels
- TM-rolled structural steels
- Weather-resistant structural steels
- Fine-grained structural steels
- Normal-strength shipbuilding steels
- Extra-high strength shipbuilding steels
- TM-rolled shipbuilding steels
- High-strength water-quenched and tempered structural steels
- Wear-resistant steels
- Special structural steels for offshore applications
- Linepipe steels
- Unalloyed steels for pressure-vessel construction
- Alloyed steels for pressurevessel construction
- HIC-resistant steels
- TM-rolled steels for pressurevessel construction
- Ni-alloyed steels for lowtemperature applications
- Unalloyed tool steels
- Alloyed tool steels
- Unalloyed mould and die steels
- Alloyed mould and die steels
- Security steels
- Longitudinally profiled plates
- Chord plates
- Semi-products

E-Service, myE-Service & E-Connect

The most important advantages at a glance

E-Service

- Help with selecting the most suitable steel
- Fast and efficient feasibility calculations
- A variety of useful tools to support manufacturing processes
- Electronic confirmation of arrival

myE-Service

- Important information about your current order status
- Direct access to order-related documents



www.dillinger.de/eservice



E-Connect

- Automatic bar code scan for reliable identification of Dillinger heavy plates
- All certificate information and test results related to the individual plates
- Clear presentation of the chemical analysis and option of transferring the values directly into the standard calculation tools, thereby obtaining valuable data, e.g. the optimum preheating temperature for flame cutting



www.dillinger.de/econnect

AG der Dillinger Hüttenwerke

POB 1580
D-66748 Dillingen/Saar

Phone +49 6831 47 0
Fax +49 6831 47 22 12

www.dillinger.de
info@dillinger.biz

Sales organisations

Germany

DILLINGER HÜTTE
VERTRIEB GmbH
Herzogstraße 6a
D-70176 Stuttgart
Germany
Phone +49 711 61 46 0
Fax +49 711 61 46 190

France

DILLINGER
INTERNATIONAL
9-11 avenue du Val-de-Fontenay
F-94120 Fontenay-sous-Bois
France
Phone +33 155 24 21 9
Fax +33 147 17 68 83



Additional contacts are listed under www.dillinger.de/d/en/contact/worldwide/index.shtml