

FACTS AND FIGURES 2020

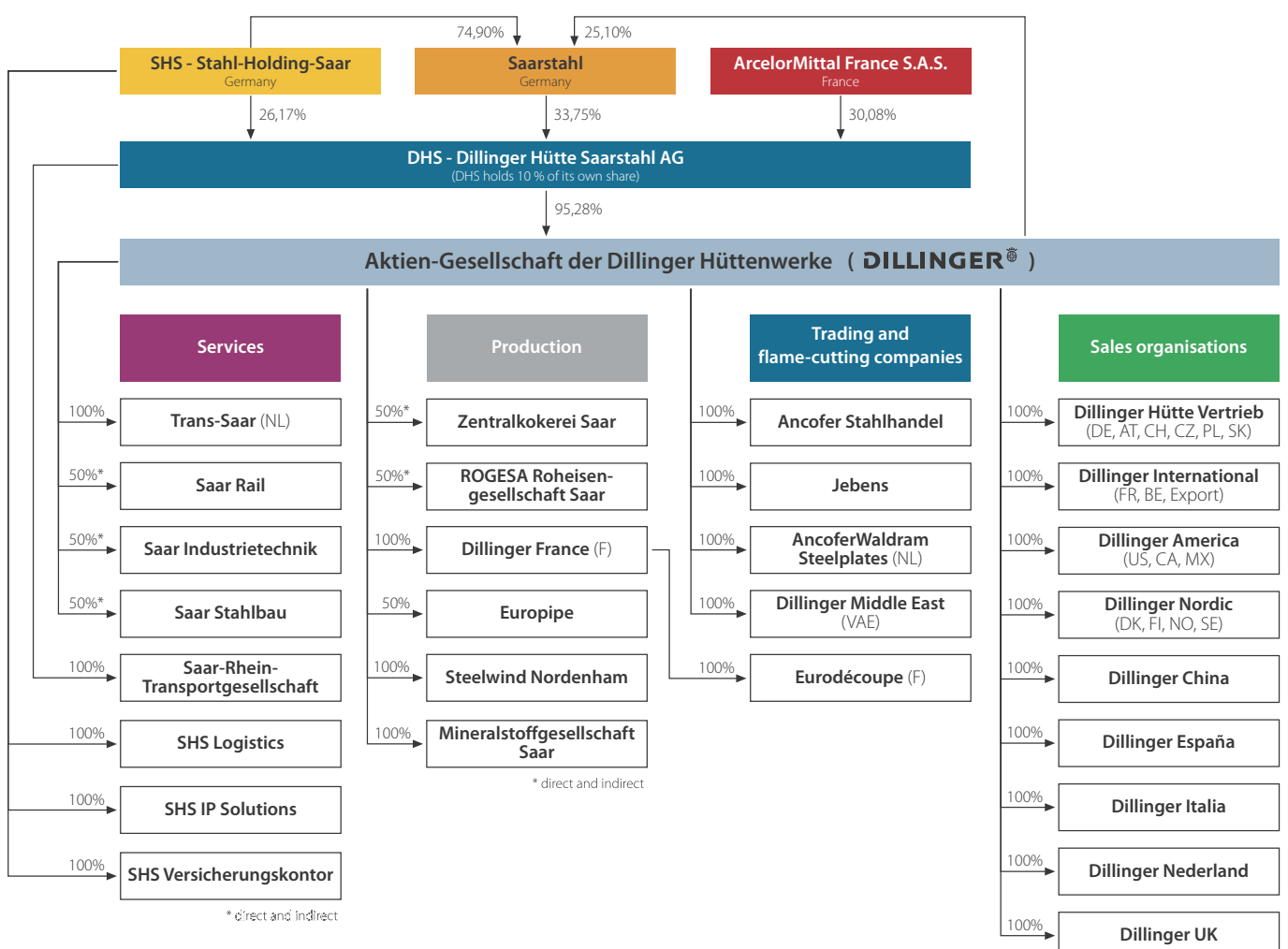


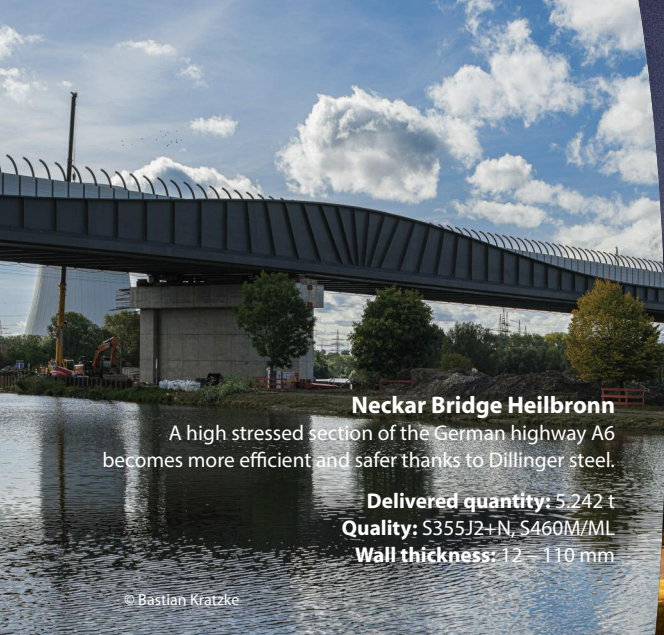
Dillinger's main data at a glance

		2017	2018	2019	2020
Production					
Crude steel production	kt	2 550	2 334	2 238	1 816
Heavy plate production in total	kt	2 043	1 910	1 847	1 406
at Dillingen	kt	1 391	1 248	1 291	1 000
at Dunkirk (Dillinger France)	kt	652	662	556	406
Employees (without trainees)					
at Dillingen	per 31.12.	4 932	4 919	4 871	3 925
at Dunkirk (Dillinger France)	per 31.12.	540	538	541	520
Key financial data Dillinger					
Sales	millions of €	1 958	2 019	1 990	1 430
EBITDA	millions of €	70	66	-20	- 50
EBIT	millions of €	- 3	- 6	-91	- 119
Key financial data and total of employees of Dillinger Group (DHS consolidated)					
Sales	millions of €	2 122	2 202	2 087	1 645
EBITDA	millions of €	210	178	-27	- 114
EBIT	millions of €	87	55	-151	- 238
Employees ¹⁾	per 31.12.	7 341	7 310	7 296	6 196

¹⁾ Transfers to the joint OHGs with Saarstahl: 1,083 employees (Saar Stahlbau: 559, Saar Industrietechnik: 261, Saar Rail: 263)

The most important shareholdings of Dillinger (simplified)





Neckar Bridge Heilbronn

A high stressed section of the German highway A6 becomes more efficient and safer thanks to Dillinger steel.

Delivered quantity: 5.242 t
Quality: S355J2+N, S460M/ML
Wall thickness: 12 – 110 mm

© Bastian Kratzke



Le Monde new headquarters in Paris

Dillinger steel supports the load-bearing structure of this master work which perfectly combines avant-garde design and durability.

Delivered quantity: 1.000 t
Quality: S355J2+N, S355N, S460M, S460ML
Wall thickness: 15 – 140 mm

© Dillinger

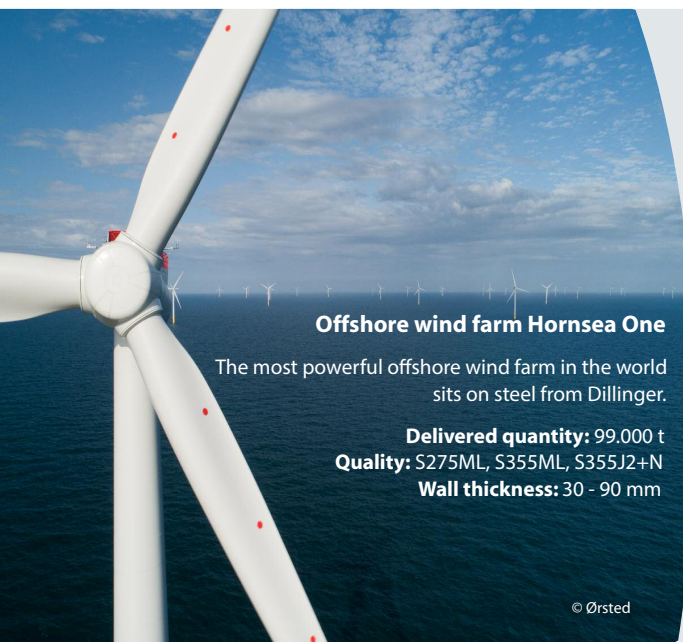
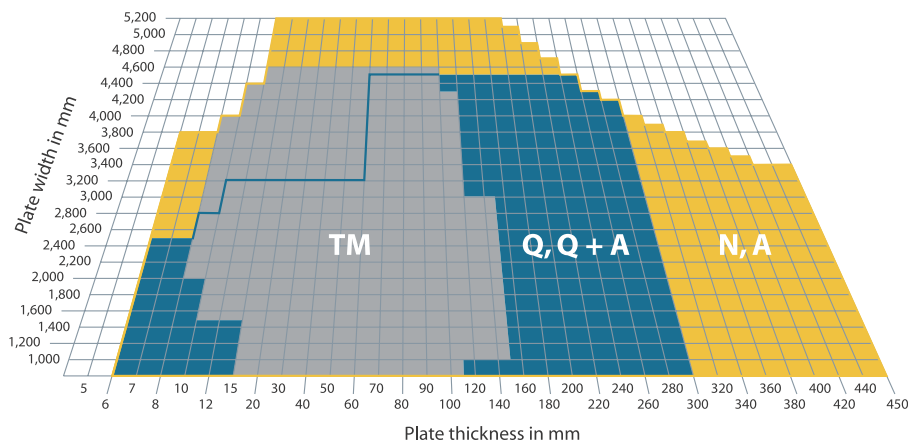
Dimensions for various delivery conditions

Plate dimensions beyond the standard dimension range are possible on request in many cases.

N, A = normalised
TM = thermomechanically rolled
Q, Q+A = quenched / quenched + tempered

Max. plate length: 28 m
 Max. plate weight: 42 t*

* up to 52 t in special cases



Offshore wind farm Hornsea One

The most powerful offshore wind farm in the world sits on steel from Dillinger.

Delivered quantity: 99.000 t
Quality: S275ML, S355ML, S355J2+N
Wall thickness: 30 - 90 mm

© Ørsted

Product mix

- General structural steels
- TM-rolled structural steels
- Weather-resistant structural steels
- Fine-grained structural steels
- Normal-strength shipbuilding steels
- Extra-high strength shipbuilding steels
- TM-rolled shipbuilding steels
- High-strength water-quenched and tempered structural steels
- Wear-resistant steels
- Special structural steels for offshore applications
- Linepipe steels
- Unalloyed steels for pressure-vessel construction
- Alloyed steels for pressurevessel construction
- HIC-resistant steels
- TM-rolled steels for pressurevessel construction
- Ni-alloyed steels for lowtemperature applications
- Unalloyed tool steels
- Alloyed tool steels
- Unalloyed mould and die steels
- Alloyed mould and die steels
- Security steels
- Longitudinally profiled plates
- Chord plates
- Semi-products

E-Service & E-Connect

The most important advantages at a glance

E-Service

- Important information about your current order status
- Direct access to order-related documents
- Complete delivery history in tabular and graphical form
- Help with selecting the most suitable steel
- Fast and efficient feasibility calculations
- A variety of useful tools to support manufacturing processes
- Electronic confirmation of arrival



www.dillinger.de/eservice



E-Connect

- Automatic bar code scan for reliable identification of Dillinger heavy plates
- All certificate information and test results related to the individual plates
- Clear presentation of the chemical analysis and option of transferring the values directly into the standard calculation tools, thereby obtaining valuable data, e.g. the optimum preheating temperature for flame cutting



www.dillinger.de/econnect

AG der Dillinger Hüttenwerke

POB 1580
 D-66748 Dillingen/Saar

Phone +49 6831 47 0
 Fax +49 6831 47 22 12

www.dillinger.de
 info@dillinger.biz

Sales organisations

Germany

DILLINGER HÜTTE
 VERTRIEB GmbH
 Herzogstraße 6a
 D-70176 Stuttgart
 Germany
 Phone +49 711 61 46 0
 Fax +49 711 61 46 190

France

DILLINGER
 INTERNATIONAL
 39/41 Rue Louis Blanc
 92400 Courbevoie
 France
 Phone +33 155 24 21 91
 Fax +33 147 17 68 83



Additional contacts are listed under www.dillinger.de/kontakt