

## CUSTOMER INFORMATION

### DILLINGER PAINT MARKING

Revision 0, February 2021, 3 pages

**Key words:** Paint marking

Dillinger is an integrated manufacturer of heavy plates and operates two rolling mills, Dillingen (DH) and Dunkirk (DF). The marking of Dillinger heavy plates is usually performed with methods such as paint marking, die stamping and / or different kind of stickers. This customer information provides deeper information on Dillinger paint marking. Depending on the rolling mill and the paint marking installation minor deviations can occur. Customer / order related marking can be agreed at the stage of enquiry.

#### General structure

Dillinger paint marking is performed on one plate surface. It is split into up to three marking blocks and up to three banderoles.

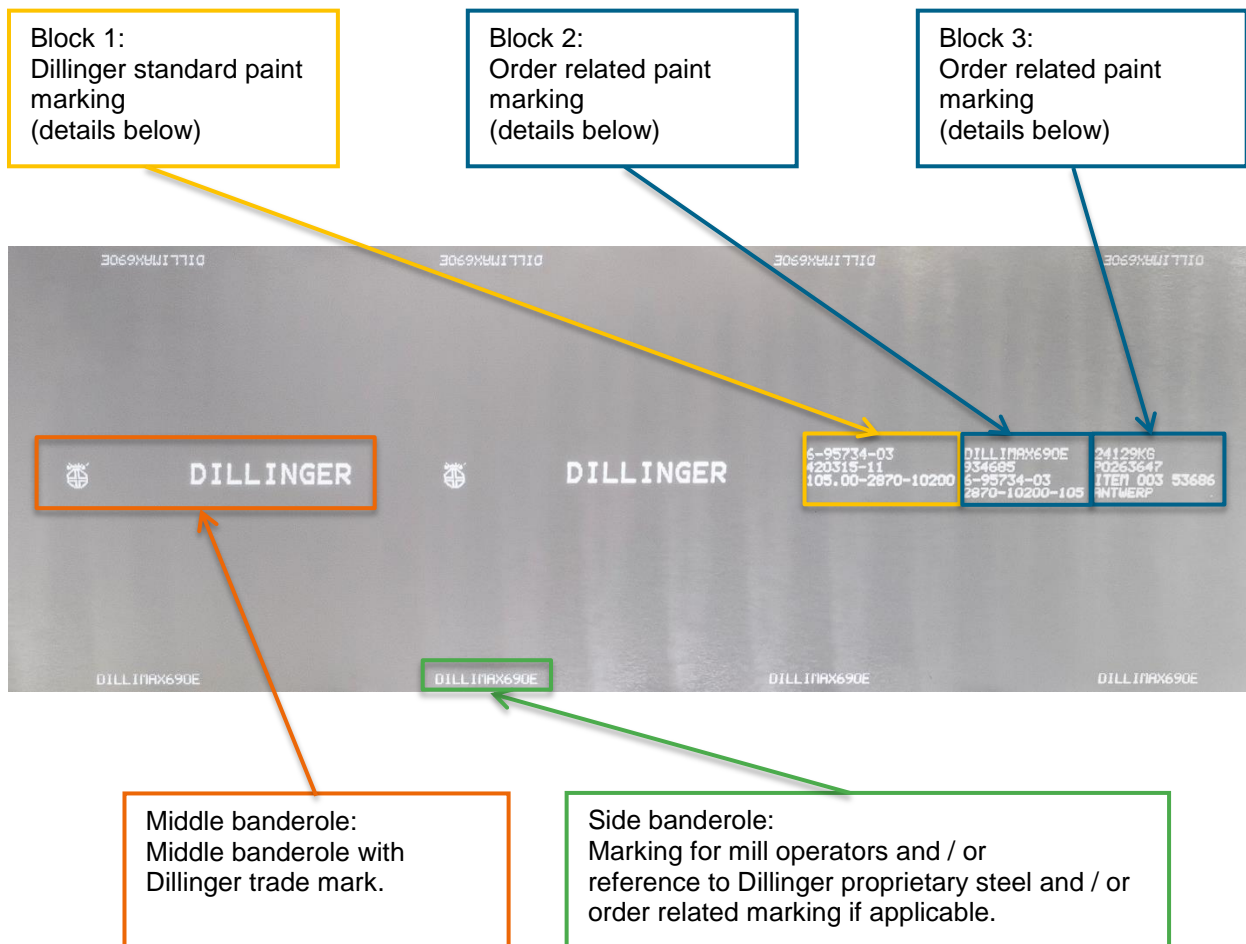


Figure 1: Structure of Dillinger paint marking (schematic)

## CUSTOMER INFORMATION

### Details for Dillinger standard paint marking (block 1)

Dillinger standard paint marking (block 1) includes data which is necessary for the Dillinger internal work flow in particular within the rolling mill and for dispatching. Nevertheless it might give useful information to our customers and is therefore harmonized between the two rolling mills, with minor exceptions.

#### Rolling mill Dillingen (DH):

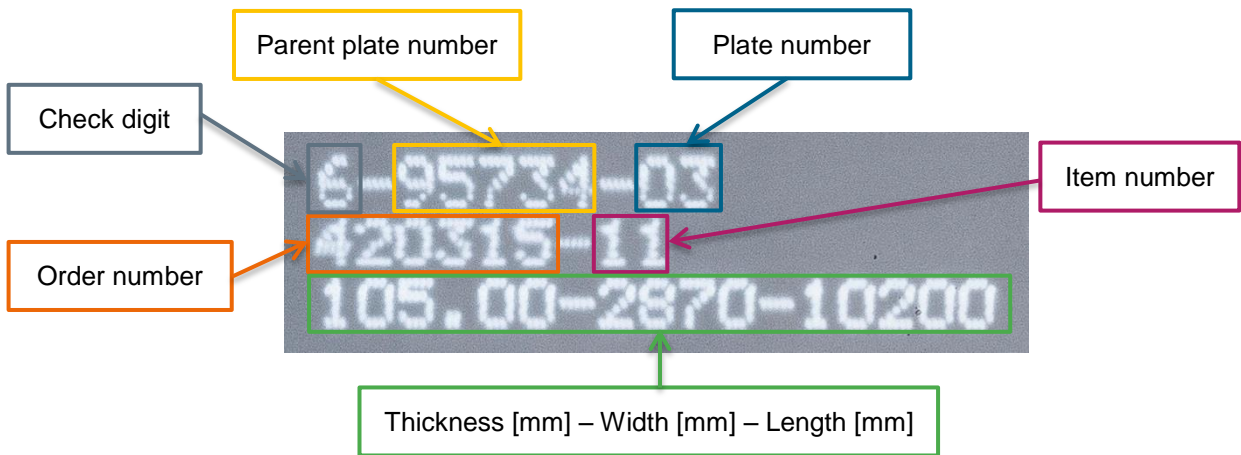


Figure 2: DH standard paint marking (schematic)

#### Rolling mill Dunkirk (DF):

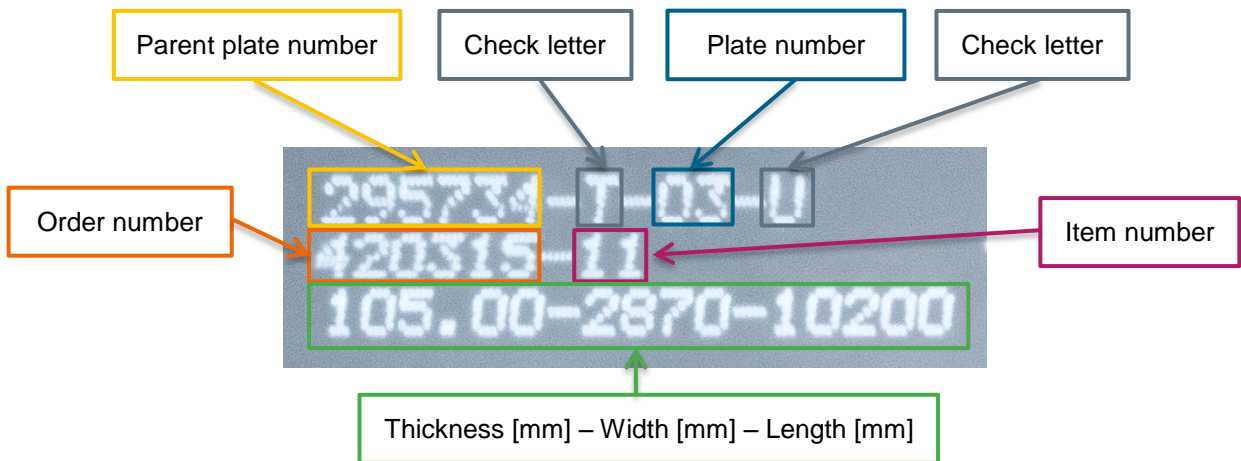


Figure 3: DF standard paint marking (schematic)

#### Remarks:

The parent plate number at DF consists of 6 digits instead of 5 digits at DH. Standard paint marking can include a fourth line for special indications.

## CUSTOMER INFORMATION

### Details for order related paint marking (block 2 and 3)

Dillinger offers the possibility of an order resp. item related paint marking which has to be specified by the customer and agreed before order placement. Generally each of the two blocks can consist of up to 4 lines with a maximum of 22 characters per line. More lines and characters can be possible on request. The possibility of an order related paint marking can be limited in case plate length is less than 4 m.

Examples for the content of the order related paint marking:

- Origin of the plates (Germany or France)
- Order, heat, parent plate and / or plate number
- Steel grade
- Theoretical weight in kg or lbs
- Customer reference / Customer name

Revision 0  
Dillingen, February 2021  
Marketing & Technical Support  
[info@dillinger.biz](mailto:info@dillinger.biz)