

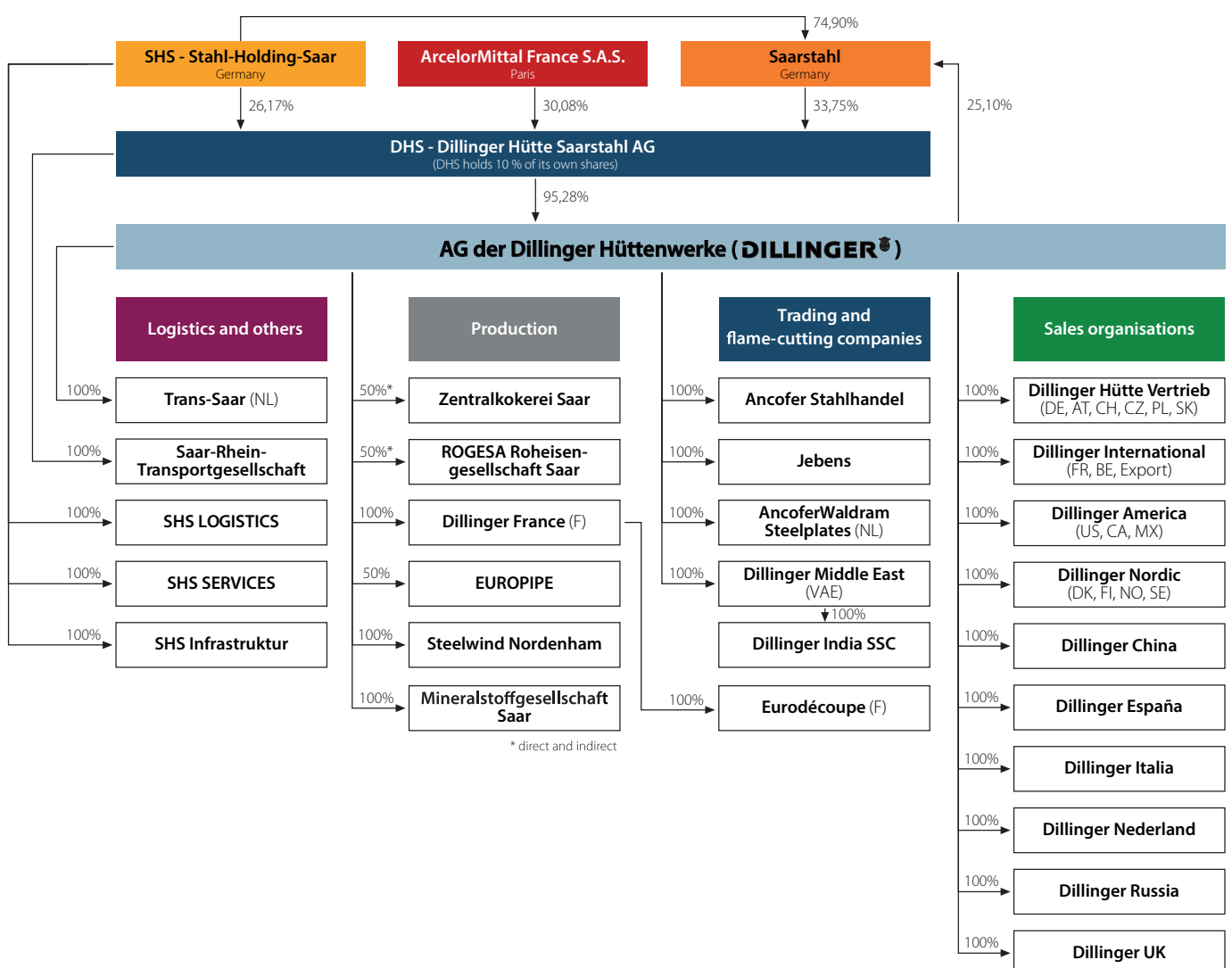
FACTS AND FIGURES 2019



Dillinger's main data at a glance

		2016	2017	2018	2019
Production					
Crude steel production	kt	2 293	2 550	2 334	2 238
Heavy plate production in total	kt	1 882	2 043	1 910	1 847
at Dillingen	kt	1 284	1 391	1 248	1 291
at Dunkirk (Dillinger France)	kt	598	652	662	556
Employees (without trainees)					
at Dillingen	per 31.12.	5 109	4 932	4 919	4 871
at Dunkirk (Dillinger France)	per 31.12.	541	540	538	541
Key financial data Dillinger					
Sales	millions of €	1 636	1 958	2 019	1 990
EBITDA	millions of €	- 37	70	66	-20
EBIT	millions of €	- 98	- 3	- 6	-91
Key financial data and total of employees of Dillinger Group (DHS consolidated)					
Sales	millions of €	1 762	2 122	2 202	2 087
EBITDA	millions of €	31	210	178	-27
EBIT	millions of €	- 80	87	55	-151
Employees	per 31.12.	7 518	7 341	7 310	7 296

The most important shareholdings of Dillinger (simplified)



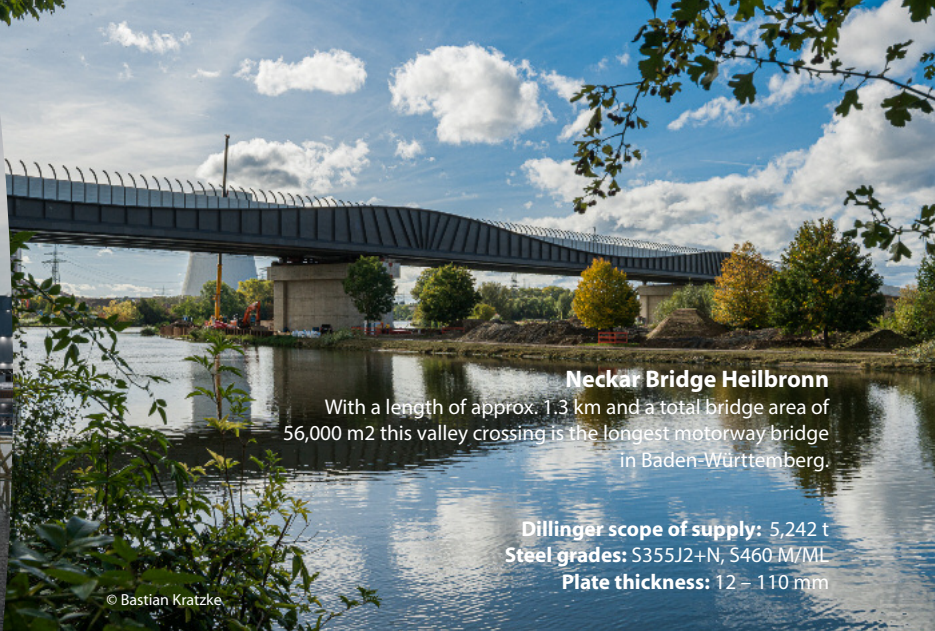
Johan Sverdrup Field

In the Norwegian Johan Sverdrup field, oil is produced at very low CO₂ emissions thanks to onshore power supply and state-of-the-art technology.

Dillinger scope of supply: 30,600 t
Steel grades: S355G9/10+M, S420G1/2+M, S420G1/2+QT, S460G2+M, S500G1/2+M, S500G2+Q
Plate thickness: 10 – 150 mm



© Laila Sømme / Equinor



Neckar Bridge Heilbronn

With a length of approx. 1.3 km and a total bridge area of 56,000 m² this valley crossing is the longest motorway bridge in Baden-Württemberg.

Dillinger scope of supply: 5,242 t
Steel grades: S355J2+N, S460M/ML
Plate thickness: 12 – 110 mm

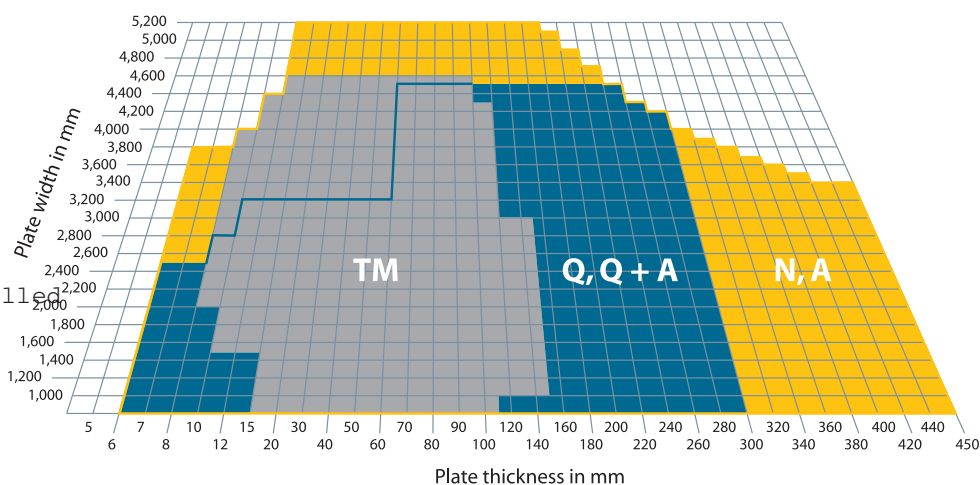
© Bastian Kratzke

Dimensions for various delivery conditions

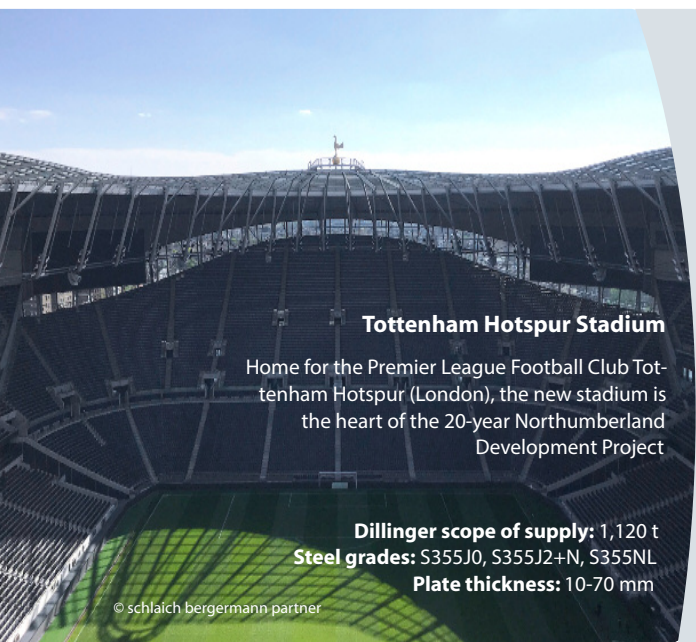
Plate dimensions beyond the standard dimension range are possible on request in many cases.

N, A = normalised
 TM = thermomechanically rolled
 Q, Q+A = quenched/ quenched + tempered

Max. plate length: 28 m
 Max. plate weight: 42 t*



* up to 52 t in special cases



Tottenham Hotspur Stadium

Home for the Premier League Football Club Tottenham Hotspur (London), the new stadium is the heart of the 20-year Northumberland Development Project

Dillinger scope of supply: 1,120 t
Steel grades: S355J0, S355J2+N, S355NL
Plate thickness: 10-70 mm

© schlaich bergemann partner

Product mix

- General structural steels
- TM-rolled structural steels
- Weather-resistant structural steels
- Fine-grained structural steels
- Normal-strength shipbuilding steels
- Extra-high strength shipbuilding steels
- TM-rolled shipbuilding steels
- High-strength water-quenched and tempered structural steels
- Wear-resistant steels
- Special structural steels for offshore applications
- Linepipe steels
- Unalloyed steels for pressure-vessel construction
- Alloyed steels for pressurevessel construction
- HIC-resistant steels
- TM-rolled steels for pressurevessel construction
- Ni-alloyed steels for lowtemperature applications
- Unalloyed tool steels
- Alloyed tool steels
- Unalloyed mould and die steels
- Alloyed mould and die steels
- Security steels
- Longitudinally profiled plates
- Chord plates
- Semi-products

E-Service & E-Connect

The most important advantages at a glance

E-Service

- Important information about your current order status
- Direct access to order-related documents
- Complete delivery history in tabular and graphical form
- Help with selecting the most suitable steel
- Fast and efficient feasibility calculations
- A variety of useful tools to support manufacturing processes
- Electronic confirmation of arrival



www.dillinger.de/eservice



E-Connect

- Automatic bar code scan for reliable identification of Dillinger heavy plates
- All certificate information and test results related to the individual plates
- Clear presentation of the chemical analysis and option of transferring the values directly into the standard calculation tools, thereby obtaining valuable data, e.g. the optimum preheating temperature for flame cutting



www.dillinger.de/econnect

AG der Dillinger Hüttenwerke

POB 1580
 D-66748 Dillingen/Saar

Phone +49 6831 47 0
 Fax +49 6831 47 22 12

www.dillinger.de
info@dillinger.biz

Sales organisations

Germany

DILLINGER HÜTTE
 VERTRIEB GmbH
 POB 104927
 D-70043 Stuttgart
 Germany
 Phone +49 711 61 46 0
 Fax +49 711 61 46 221

France

DILLINGER
 INTERNATIONAL
 39/41 Rue Louis Blanc
 92400 Courbevoie
 France
 Phone +33 155 24 21 91
 Fax +33 147 17 68 83



Additional contacts are listed under www.dillinger.de/kontakt