

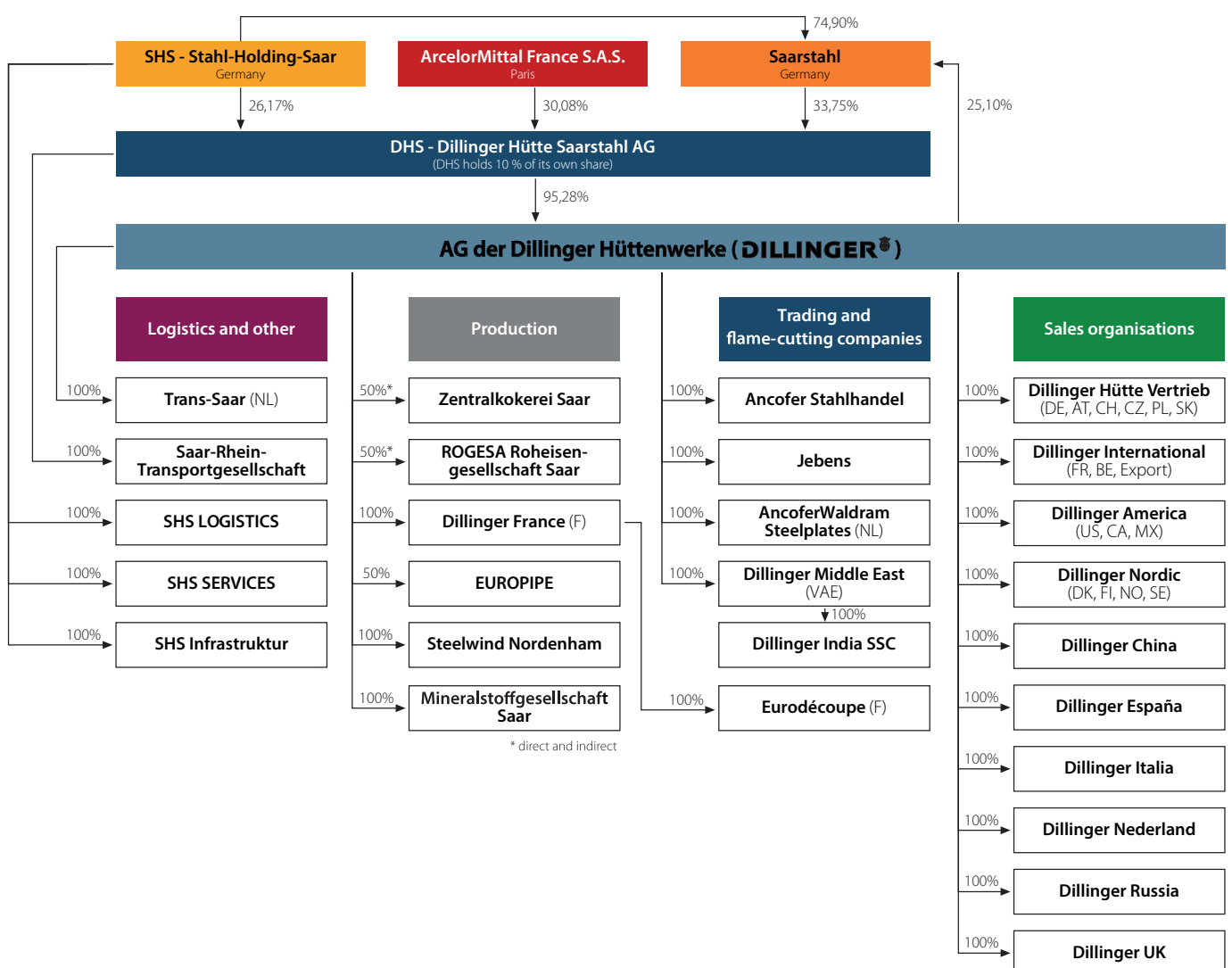
FACTS AND FIGURES 2018

DILLINGER 

Dillinger's main data at a glance

		2015	2016	2017	2018
Production					
Crude steel production	kt	2 429	2 293	2 550	2 334
Heavy plate production in total	kt	1 856	1 882	2 043	1 910
at Dillingen	kt	1 296	1 284	1 391	1 248
at Dunkirk (Dillinger France)	kt	560	598	652	662
Employees (without trainees)					
at Dillingen	per 31.12.	5 081	5 109	4 932	4 919
at Dunkirk (Dillinger France)	per 31.12.	557	541	540	538
Key financial data Dillinger					
Sales	millions of €	1 732	1 636	1 958	2 019
EBITDA	millions of €	110	- 37	70	66
EBIT	millions of €	57	- 98	- 3	- 6
Key financial data and total of employees of Dillinger Group (DHS consolidated)					
Sales	millions of €	1 838	1 762	2 122	2 202
EBITDA	millions of €	118	31	210	178
EBIT	millions of €	10	- 80	87	55
Employees	per 31.12.	7 536	7 518	7 341	7 310

The most important shareholdings of Dillinger (simplified)



Offshore wind farm Borkum Riffgrund 2, Germany

The 25 km² wind farm area in the North Sea has a total capacity of 450 MW. This means around 460,000 German households can be supplied with green energy.

Dillinger scope of supply: 40,800 t
Steel grades: S355J0, S355ML, S355G9+M, S355G10+M, S420ML, S460G2+M
Plate thickness: 20 – 95 mm



Kienlesberg Bridge in Ulm, Germany

The tram, pedestrian and bicycle bridge leads across the highly frequented railway tracks of Ulm's Central Station and thus connects the Ulm's city center with the science city located in the north-west.

Length: 270 m
Dillinger scope of supply: 1,750 t
Steel grades: S460NL, S355N, S355J2+N
Plate thickness: 15 – 60 mm

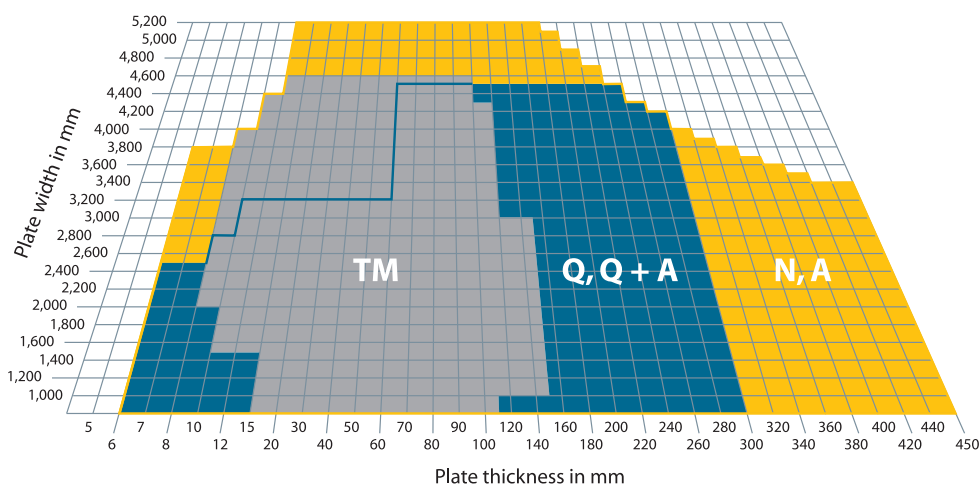


Dimensions for various delivery conditions

Plate dimensions beyond the standard dimension range are possible on request in many cases.

N, A = normalised
TM = thermomechanically rolled
Q, Q+A = quenched / quenched + tempered

Max. plate length: 28 m
 Max. plate weight: 42 t*



* up to 52 t in special cases



European Gas Pipeline Link EUGAL

The European Gas Pipeline Link (EUGAL) with a transport capacity of 55 billion m³ of natural gas per year extends over a length of some 480 km from the coast of the Baltic Sea near Greifswald to the border of the Czech Republic.

Dillinger scope of supply: 247,000 t
Steel grade: L485ME-PSL2
Plate thickness: 23 mm

© GASCADE

Product mix

- General structural steels
- TM-rolled structural steels
- Weather-resistant structural steels
- Fine-grained structural steels
- Normal-strength shipbuilding steels
- Extra-high strength shipbuilding steels
- TM-rolled shipbuilding steels
- High-strength water-quenched and tempered structural steels
- Wear-resistant steels
- Special structural steels for offshore applications
- Linepipe steels
- Unalloyed steels for pressure-vessel construction
- Alloyed steels for pressure vessel construction
- HIC-resistant steels
- TM-rolled steels for pressure vessel construction
- Ni-alloyed steels for low temperature applications
- Unalloyed tool steels
- Alloyed tool steels
- Unalloyed mould and die steels
- Alloyed mould and die steels
- Security steels
- Longitudinally profiled plates
- Chord plates
- Semi-products

E-Service & E-Connect

The most important advantages at a glance

E-Service

- Important information about your current order status
- Direct access to order-related documents
- Complete delivery history in tabular and graphical form
- Help with selecting the most suitable steel
- Fast and efficient feasibility calculations
- A variety of useful tools to support manufacturing processes



www.dillinger.de/eservice



E-Connect

- Automatic bar code scan for reliable identification of Dillinger heavy plates
- All certificate information and test results related to the individual plates
- Clear presentation of the chemical analysis and option of transferring the values directly into the standard calculation tools, thereby obtaining valuable data, e.g. the optimum preheating temperature for flame cutting



www.dillinger.de/econnect

AG der Dillinger Hüttenwerke

POB 1580
 D-66748 Dillingen/Saar

Phone +49 6831 47 0
 Fax +49 6831 47 22 12

www.dillinger.de
info@dillinger.biz

Sales organisations

Germany

DILLINGER HÜTTE
 VERTRIEB GmbH
 POB 104927
 D-70043 Stuttgart
 Germany
 Phone +49 711 61 46 0
 Fax +49 711 61 46 221

Frankreich

DILLINGER
 INTERNATIONAL
 39/41 Rue Louis Blanc
 92400 Courbevoie
 France
 Phone +33 155 24 21 91
 Fax +33 147 17 68 83



You can find further contacts on www.dillinger.de/kontakt