



### The Muiderberg rail bridge, The Netherlands

The new rail bridge at Muiderberg is among the largest arched bridges of its type, with a span of 255 metres, a width of 17 metres and a height of 55 metres.

Length: 255 m  
 Dillinger delivery: 8 250 t  
 Plate thickness: up to 120 mm  
 Steel grades: S355N/NL, S355KZ+N, S460M/ML

© Rijkswaterstaat

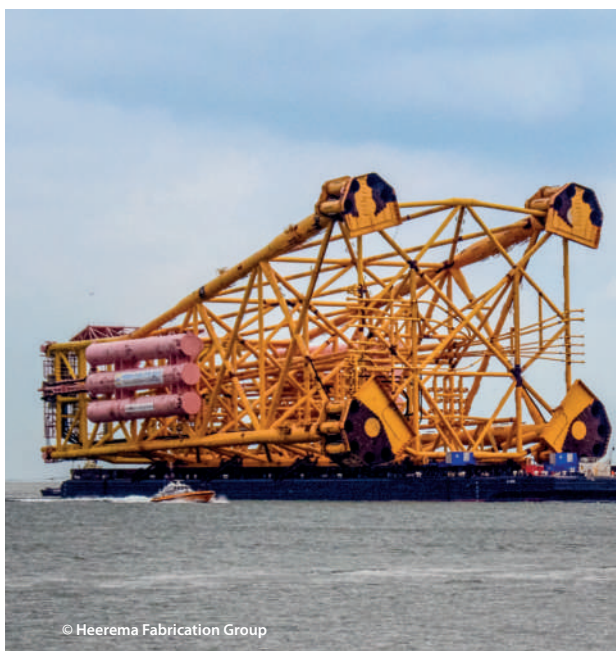
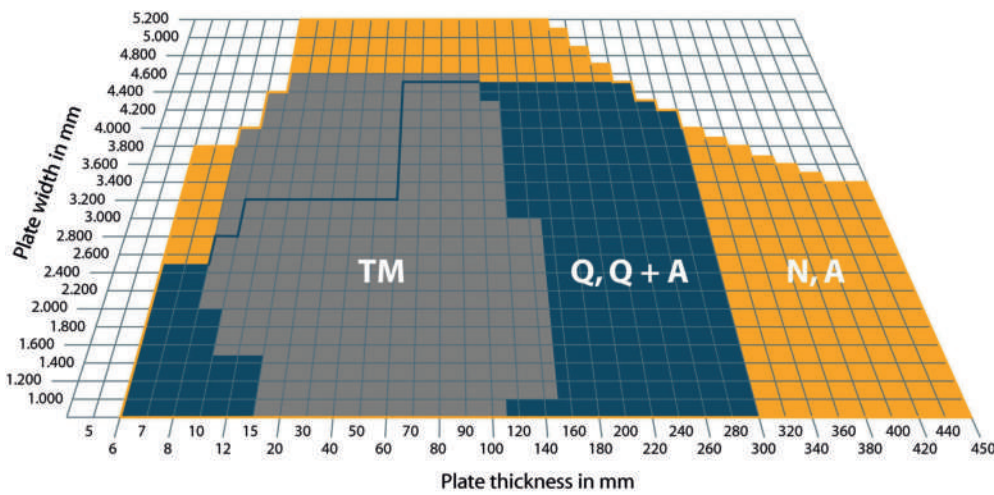
### Dimensions for various delivery conditions

Plate dimensions beyond the standard dimension range are possible on request in many cases.

**N, A** = normalised  
**TM** = thermomechanically rolled  
**Q, Q+A** = quenched / quenched + tempered

Max. plate length: 28 m  
 Max. plate weight: 42 t\*

\* up to 52 t in special cases



© Heerema Fabrication Group

### Gina Krog oil and gas field, North Sea

Jacket for the Gina Krog gas and oil field off the coast of Norway, in the North Sea west of Stavanger.

Water depth: 110 - 120 m  
 Dillinger delivery: 21 800 t  
 Plate thicknesses: 10 - 150 mm  
 Plate widths: up to 4 675 mm  
 Steel grades: S355J2+N, S355K2, S355G9/10+M, S420/460G1/2+M, S460G2+Q

### Gemini offshore wind farm, The Netherlands

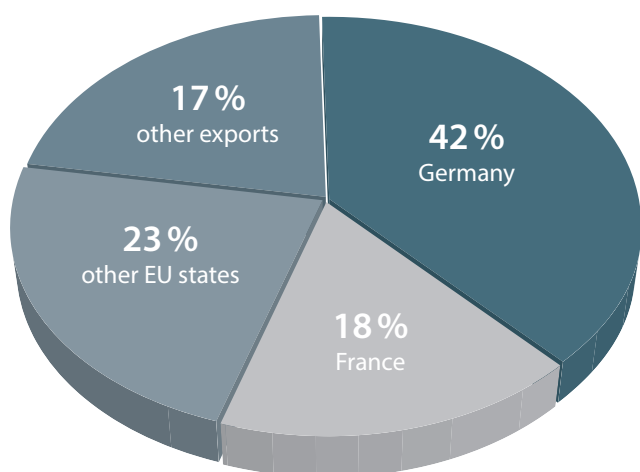
Since 2017, this offshore wind farm, comprising some 150 turbines with a total output of 600 MW, has been capable of supplying electricity to more than 400 000 Dutch households.

Dillinger delivery: 94 500 t  
 Steel grade: S355ML  
 Plate thicknesses: up to 95 mm



© Geminiwindpark

### Dillinger sales 2016 by countries



### Product mix

- General structural steels
- TM-rolled structural steels
- Weather-resistant structural steels
- Fine-grained structural steels
- Normal-strength shipbuilding steels
- Extra-high strength shipbuilding steels
- TM-rolled shipbuilding steels
- High-strength water-quenched and tempered structural steels
- Wear-resistant steels
- Special structural steels for offshore applications
- Linepipe steels
- Unalloyed steels for pressure-vessel construction
- Alloyed steels for pressure-vessel construction
- HIC-resistant steels
- TM-rolled steels for pressure-vessel construction
- Ni-alloyed steels for low-temperature applications
- Unalloyed tool steels
- Alloyed tool steels
- Unalloyed mould and die steels
- Alloyed mould and die steels
- Security steels
- Longitudinally profiled plates
- Chord plates
- Semi-products

### Sales organisations

#### Germany

DILLINGER HÜTTE VERTRIEB GmbH  
 POB 104927  
 D-70043 Stuttgart  
 Germany

Phone +49 711 61 46 0  
 Fax +49 711 61 46 221

#### France

DILLINGER INTERNATIONAL  
 39/41 Rue Louis Blanc  
 92400 Courbevoie  
 France

Phone +33 155 24 21 91  
 Fax +33 147 17 68 83

Our coordination centre in Dillingen will be pleased to inform you of contacts in other countries, please call

Phone +49 6831 47 22 23  
 Fax +49 6831 47 33 50

or click on „contact worldwide“ at [www.dillinger.de](http://www.dillinger.de)

### AG der Dillinger Hüttenwerke

POB 1580  
 D-66748 Dillingen/Saar

Phone +49 6831 47 0  
 Fax +49 6831 47 22 12

[www.dillinger.de](http://www.dillinger.de)  
[info@dillinger.biz](mailto:info@dillinger.biz)



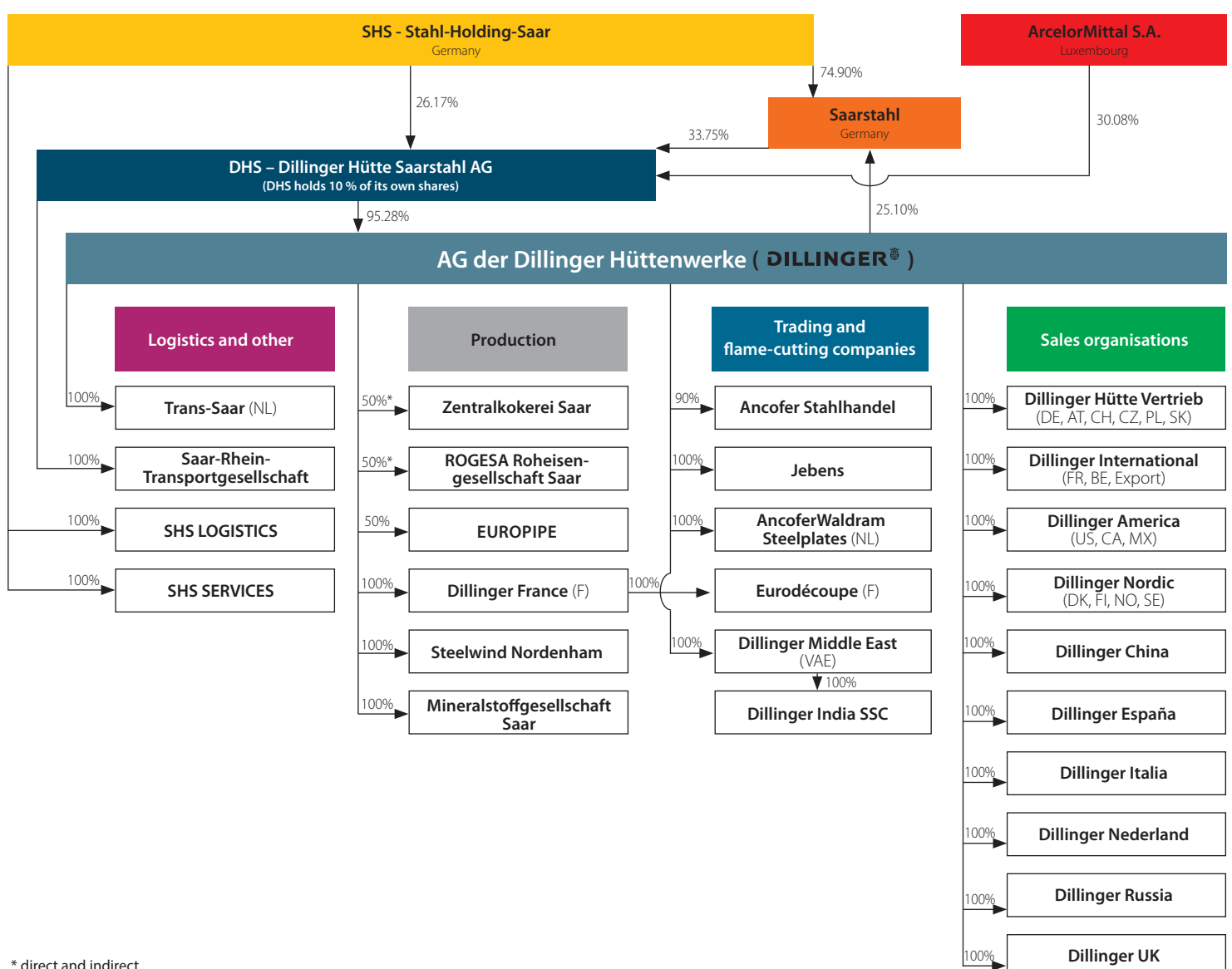
# Facts Figures 2016



## Dillinger's main data at a glance

		2013	2014	2015	2016
<b>Production</b>					
Crude steel production	kt	2 023	2 345	2 401	2 267
Heavy plate production in total	kt	1 660	1 820	1 856	1 882
at Dillingen	kt	1 114	1 258	1 296	1 284
at Dunkirk (Dillinger France)	kt	546	562	560	598
<b>Employees (without trainees)</b> per 31.12.					
at Dillingen		5 291	5 048	5 081	5 109
at Dunkirk (Dillinger France)		590	550	557	541
<b>Key financial data of Dillinger</b>					
Sales	Mio. €	1 816	1 872	1 732	1 636
EBITDA	Mio. €	3	237	110	- 37
EBIT	Mio. €	- 53	183	57	- 98
<b>Key financial data and total of employees of Dillinger Group</b> per 31.12.					
Sales	Mio. €	1 979	2 001	1 838	1 762
EBITDA	Mio. €	- 66	193	118	31
EBIT	Mio. €	- 167	88	10	- 80
Employees		7 614	7 365	7 536	7 518

## The most important shareholdings of Dillinger (simplified)



\* direct and indirect